








## HOW TO SELECT PORTS:

-  **CHOOSE LOCATIONS ON YOUR BOAT THAT COULD BENEFIT FROM ADDITIONAL LIGHT AND AIR.**
-  **WHAT STYLE DO YOU NEED?** Do you need an opening port or a fixed port? The slope of the mounting location will indicate the type of opening port required, NEWPORT™ SELF DRAIN or NEWPORT™ RAIN DRAIN. Fixed ports are sized to match. See the illustration on page 24.
-  **WHAT SIZE DO YOU WANT?** It is generally best to mount the largest port for the available mounting location for new installations. A larger port provides more light and better ventilation. Remember to check both interior and exterior clearances.
-  **WHAT IS THE REQUIRED SPIGOT LENGTH?** For measuring purposes, the spigot is the part of a port which passes through the cabin wall. Estimate the hull or cabin wall thickness at each mounting location as accurately as possible, and add 1/4". Both styles come in standard 1" or 2" spigot lengths, with custom lengths available.
-  **REPLACE OTHER BRANDS.** Beckson Opening and Fixed Ports are engineered to standard mounting hole sizes for interchangeability and replacing other manufacturers' ports.
-  **GET DETAILED INSTALLATION INSTRUCTIONS** at [www.beckson.com/installport.html](http://www.beckson.com/installport.html). You can also phone for technical assistance.
-  **CONTACT US!** Call customer service at Beckson, to answer your questions regarding service or installation. 203-333-1412, 8 AM-4 PM Eastern Time.

**“** About 20 years ago, I installed a set of your wonderful ports in our aft cabin 25 foot Bayliner. I would have to say that these two items that were installed in our boat for light and air were without a doubt the finest trouble free products that I know of.

*Cliff and Sandy Steele, Kentucky, long-time Great Lakes boaters and authors of many thoughtful, entertaining, and informative articles about boating.*

P0714-WS-10



PF414-BS-20

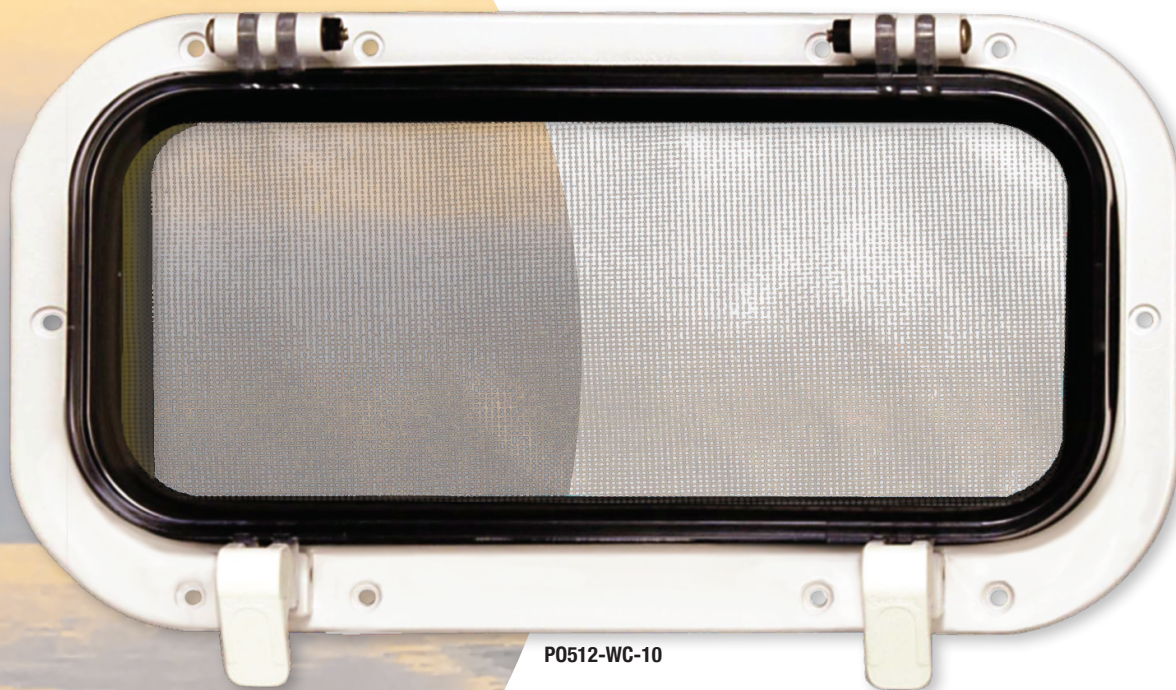


PB525-WC



## WHY CHOOSE BECKSON NEWPORT PORTS?

- YEARS OF TROUBLE-FREE USE WITH NO CORROSION, NO CONDENSATION, NO LEAKS. PORTS OVER 45 YEARS OLD STILL PROVIDE WATERTIGHT SERVICE!
- NO WATERFALL WHEN YOU OPEN THE WINDOW.
- MATCHING FIXED AND OPENING PORTS ARE AVAILABLE.
- OTHER MANUFACTURERS' PORTS CAN BE UPGRADED TO BECKSON PORTS.
- BECKSON OPENING PORTS INCLUDE SCREENS AND EXTERIOR TRIM RINGS.
- ALL BECKSON FIXED PORTS INCLUDE EXTERIOR TRIM RINGS.
- INTERNATIONAL: ALL BECKSON OPENING PORTS ARE CE APPROVED.
- EXCELLENT CUSTOMER SUPPORT



P0512-WC-10

**OPENING PORTS: SELF DRAIN / RAIN DRAIN**

**MATCHING FIXED PORTS**

**ROUND INSPECTION WINDOWS**

**OPENING PORT SIZES**

**COMBINATION OPENING & MATCHING FIXED PORTS**

**SPECIALTY FIXED PORTS**

**PORT GASKETS INSTALLATION**

**PORT PARTS**

**ACCESSORIES**

**LATCHES & KNOBS**



## newport™

### OPENING PORTS: TWO STYLES

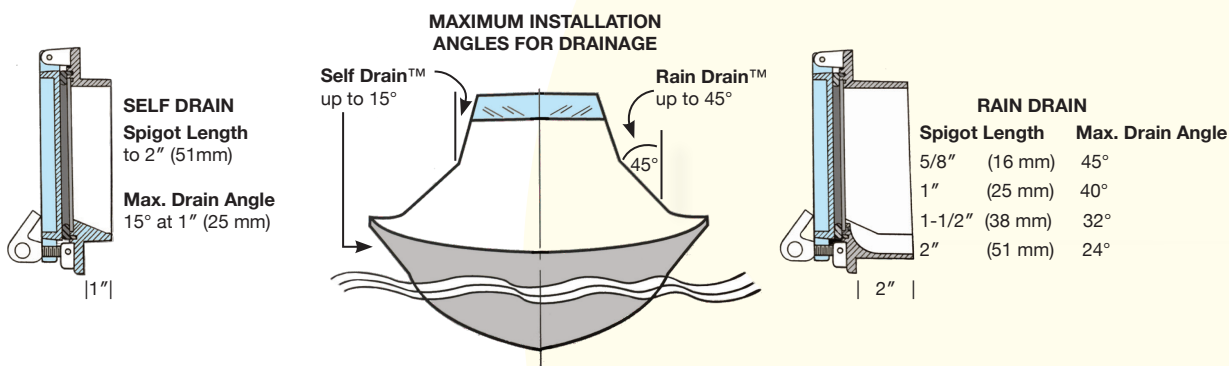
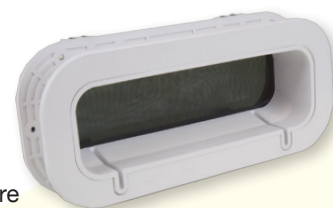
#### SELF DRAIN™ OPENING PORTS

The Beckson Self Drain Opening Port is innovatively designed with an angled drainage ramp molded on the inside of the spigot. This design promotes drainage without the hassle of making angled cuts in the hull. This also allows for thru-bolting, which is impossible in windows where an angled spigot extends below the bolt holes. The internal angle seats tightly against the gasket and lens, thus omitting an exterior water retention ledge present in most other ports. (No water-fall when you open the port after a rain.) Self Drain Opening Ports are ideal for mounting where installation is within 15° of vertical (with spigot length up to one inch.) Longer spigots are available for vertical installations. For greater angles use Beckson Rain Drain Ports.



#### RAIN DRAIN™ OPENING PORTS

The Beckson Rain Drain Opening Port is intended primarily for installation where cabin sides have excessive angles and other ports would collect rain and spray. These ports have all the features of our other meticulously designed ports, with the added benefit of Beckson's own Rain Drain. The Rain Drain port, cut at 5/8", will drain while tipped up to 45° degrees. Unlike others, Beckson Rain Drain Ports have open drains which resist clogging and are easy to clean. Other drain windows retain up to one-third of a cup of water in each window when closed. Opening them can soak you and the boat. Where greater mounting angles exist, insist on Beckson Rain Drain ports for superior service.



### MATCHING FIXED PORTS

Beckson Newport Fixed Ports are designed for light only, and for areas where interior bulkheads, shelves or other restrictions may prevent the installation of an opening port. These matching fixed ports are identical in size, shape, style, mounting, and strength to our opening ports. Standard construction provides for the fixed port to be installed from the interior, with the trim ring on

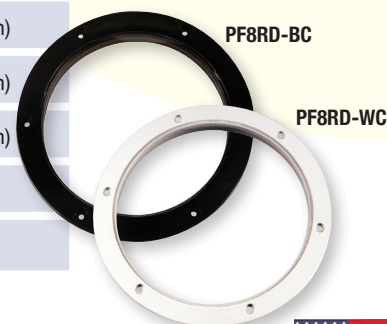


the exterior, to maintain the same recessed aesthetic appearance as Beckson opening ports. Newport Fixed Ports and Newport Opening Ports share the same mounting hole sizes and overall frame specifications so they are interchangeable. For special installations such as cockpit bulkheads, to simplify installation, or where the same look is not required, Newport Fixed Ports can also be constructed for REVERSE installation, with the trim ring on the interior.

### ROUND FIXED INSPECTION WINDOWS

MODEL#	DESCRIPTION	HOLE CUT	OD
4"	PF4RD-BS 4" BLACK BODY, SMOKED LENS	4-5/8" (11.7 cm)	6-1/2" (15.6 cm)
	PF4RD-WC 4" WHITE BODY, CLEAR LENS	4-5/8" (11.7 cm)	6-1/2" (15.6 cm)
6"	PF6RD-BS 6" BLACK BODY, SMOKED LENS	6-1/2" (16.5 cm)	8-1/8" (20.6 cm)
	PF6RD-WC 6" WHITE BODY, CLEAR LENS	6-1/2" (16.5 cm)	8-1/8" (20.6 cm)
8"	PF8RD-BS 8" BLACK BODY, SMOKED LENS	8-1/8" (20.6 cm)	10" (25.4 cm)
	PF8RD-BC 8" BLACK BODY, CLEAR LENS	8-1/8" (20.6 cm)	10" (25.4 cm)

\* OD: OVERALL DIMENSION  
ID: INSIDE DIMENSION



SOLD AS A SINGLE UNIT. NOT SUPPLIED WITH TRIM RING.

## OPENING PORTS: SIX SIZES

To determine the size of the ports you need, use the chart below. The overall dimension is the trim ring or frame size. For measuring purposes, the spigot is the part of a port which passes through the cabin wall. Measure from the

outboard end of the frame back to the screen and add 1/4". The end of the spigot should be flush with the exterior surface of the trim ring, which will maximize the draining action of the frame.



310



410



414



512



714



8RD

PORT SIZE	INSIDE FRAME (HOLE CUT)	OUTSIDE FRAME	LENS OD	SCREEN OD
310	3-1/2" x 10-3/8" (8.9 cm x 26.4 cm)	5-1/2" x 12-3/8" (14.0 cm x 31.4 cm)	3-9/16" x 11" (9.0 cm x 28.0 cm)	2-5/16" x 10-1/4" (5.9 cm x 26.0 cm)
410	4-1/2" x 10-1/2" (11.4 cm x 26.7 cm)	5-1/2" x 12-3/8" (17.1 cm x 32.4 cm)	4-5/8" x 10-7/8" (10.2 cm x 27.6 cm)	4-3/16" x 10-7/16" (10.6 cm x 26.5 cm)
414	4-1/2" x 14-1/2" (11.4 cm x 36.8 cm)	6-3/4" x 16-3/4" (17.1 cm x 42.5 cm)	4-11/16" x 14-7/8" (11.9 cm x 37.8 cm)	4-3/16" x 14-7/16" (10.6 cm x 36.7 cm)
512	5-1/2" x 12-1/2" (14.0 cm x 31.8 cm)	7-3/4" x 14-5/8" (19.7 cm x 37.1 cm)	5-3/4" x 13" (14.6 x 33.0 cm)	5-1/4" x 12-1/2" (13.3 cm x 31.8 cm)
714	7-1/2" x 14-3/8" (19.0 cm x 36.5 cm)	9-3/4" x 16-3/4" (24.8 cm x 42.5 cm)	7-7/8" x 15-1/8" (20.0 cm x 38.4 cm)	7-5/16" x 14-7/16" (18.6 cm x 36.7 cm)
8RD	8-1/2" DIAMETER (21.6 cm)	10-3/4" DIAMETER (27.3 cm)	8-1/2" DIAMETER (21.6 cm)	8" DIAMETER (20.3 cm)

\* **OD, OA:**  
OVERALL DIMENSION  
**ID:** INSIDE DIMENSION

\* 714 opening ports have 4 cams, the smaller ports have two. The 8RD has three cams.



8RD (INTERIOR VIEW)

### ORDERING CODE FOR OPENING AND FIXED PORTS

PORT	TYPE	SIZE	STYLE	BODY COLOR	LENS TINT	SPIGOT LENGTH
		3x10				10 = 1" (2.5 cm)
P	O (OPENING)	4x10	— (SELF DRAIN)	W (WHITE)	C (CLEAR)	20 = 2" (5.1 cm)
P	F (FIXED)	4x14	D (RAIN DRAIN)	B (BLACK)	S (SMOKE)	NOTE: 3 x 10 ports have a 1-1/2" (3.8 cm) spigot. Longer and shorter spigot lengths available. Please call us.
		5x12			B (BRONZE) (limited sizes)	
		7x14				
		8RD				

\* MOST COMBINATIONS AVAILABLE:  
All Beckson Opening Ports include screens and exterior trim rings. Beckson Cam Latches are standard; twist knobs available. See page 31 for latches and knobs.

EXAMPLES:

**PO410DBC-10** (OPENING PORT, 4"x 10", RAIN DRAIN, BLACK FRAME, CLEAR LENS, 1" SPIGOT)

**PF714-WS-20** (FIXED PORT, 7" x 14", WHITE FRAME, SMOKED LENS, 2" SPIGOT)

